

## JiaRongHua STS Prepaid Water Meter

IP68

Ingress protection IP68 waterproof



Up to 8 years battery life



Automatic valve controlling

STS

STS Standard



Real-time clock

Step  
TariffUtilities can set step price  
into meter on requestAnti-Tamper  
Magnetic field protection

LORA-RF communication ( CIU )

Pay by mobile payment  
M-PESA, Alipay, MTN, Airtel, etc.

JRH Smart Split Keypad Water Meter is composed of a Class C prepaid Multi-jet water meter and a separate customer interface unit (CIU) with RF wireless communication module.

### Application:

Measuring the volume of cold water through water pipe.

### Compliance with Standard

- \* ISO 9001 ; ISO 14001
- \* STS Certificated

Remote Metering, Smart Life!

Website: [www.jrhmeter.com](http://www.jrhmeter.com)

Email: [abby@szjrh.com](mailto:abby@szjrh.com)

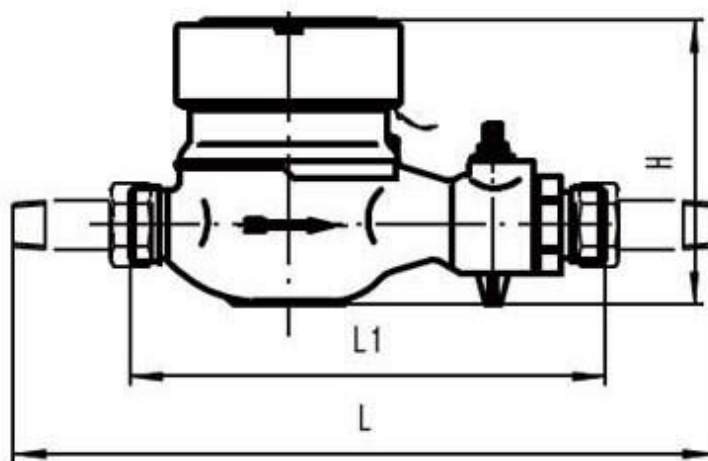
Tel: +86 15767831427

## Metrological Parameters of different size

Size	DN15 1/2"	DN20 3/4"	DN25 1"
Overload flow rate Q4	3.125	5.0	7.875
Permanent flow rate Q3	2.5	4.0	6.3
Transitional flow rate Q2	0.025	0.040	0.063
Minimum flow rate Q1	0.0156	0.025	0.0393
Ratio "R" Q3/Q1	160	160	160

## Features

- \* Maximum working pressure: 16 Bar
- \* Maximum pressure loss: 0.6 Bar
- \* Maximum reading: 99999
- \* Working temperature: <50°C
- \* Error:  $Q1 \leq Q \leq Q2$  5%;  
 $Q2 \leq Q < Q4$  2%



## Meter Dimension

Size	DN15 1/2"	DN20 3/4"	DN25 1"
Length(L)	165/190	190	225/260
Width(W)	99	99	103
Height(H)	104	106	114
Connecting Thread	G3/4B	G1B	G1-1/4B

## Functions

The integrated keypad of water meter and CIU are offered to enter recharge TOKEN and check information by short codes.

The CIU is installed inside customer's house, when the meter is kept away from customer's reach in locked boxes or houses.

### Basic Functions

- \* Meter Recharge: By inputting 20 digits Token.
- \* Low Credit Alarm: Alarm value can be set by inputting corresponding TOKEN.
- \* Non-return valve: Non-return valve inside for preventing back-flow.

### Communication:

The meter is available with AMI system through LORA-RF or Bluetooth 4.0 on request.

### Anti-Tamper Functions:

Meter will automatically close the valve after detection of magnetic field and open cover event. Working normally after inputting clear tamper Token.

### Step Tariff:

Meters can be set Step Tariff by inputting corresponding TOKEN. Utilities can set 3 step prices on request.

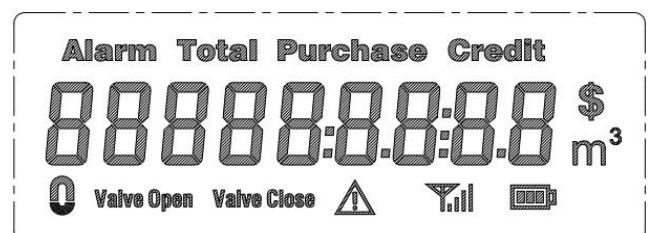
### Overdraft Collection:

Non- Revenue water (Overdraft) can be collected day by day or month by month.

### Information Inquiry:

Consumer could check the data like Credit Remain, Total Purchased and Total Credit by inputting the short code.

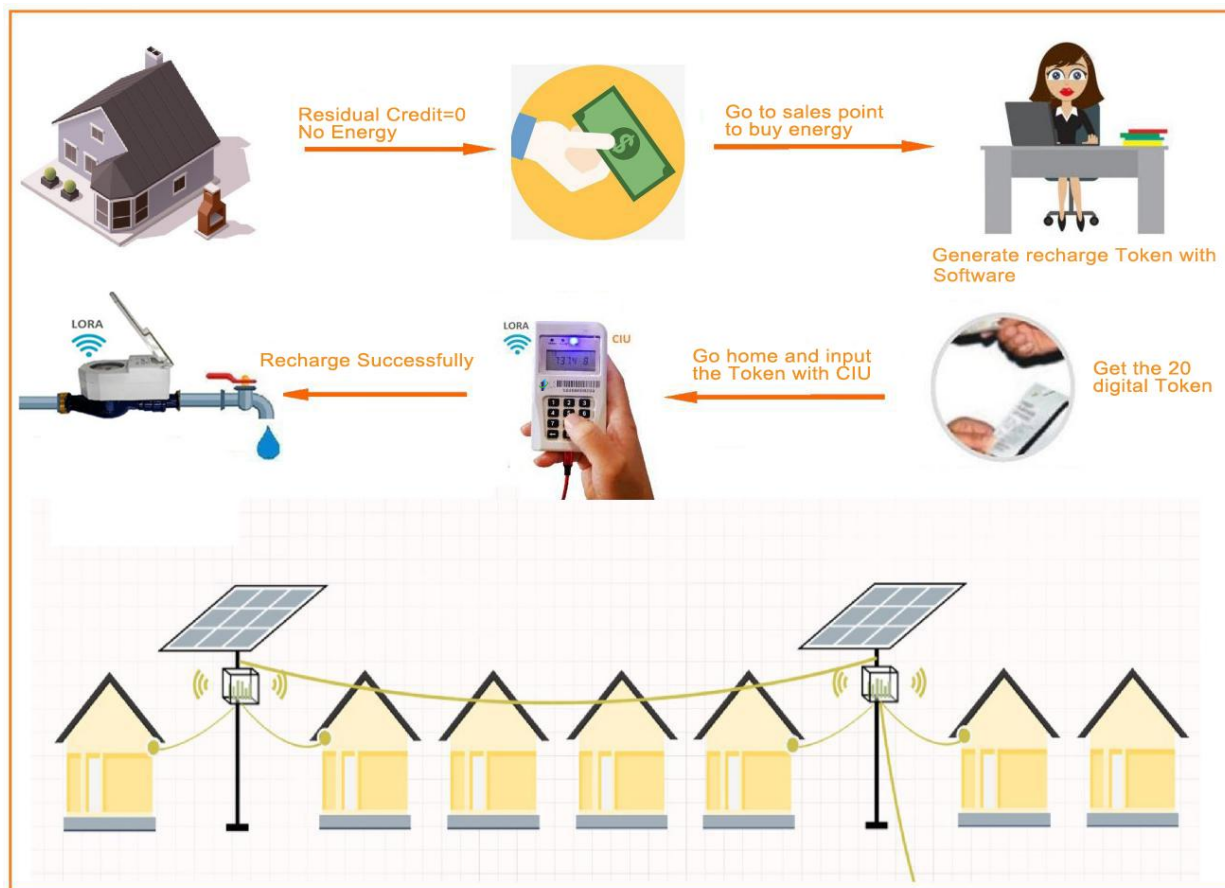
### Liquid Crystal Display:



## Three solutions to recharge prepaid water meter

### 1. By Software

⇒ Via local sales point or handheld mobile vending unit



### Operation software

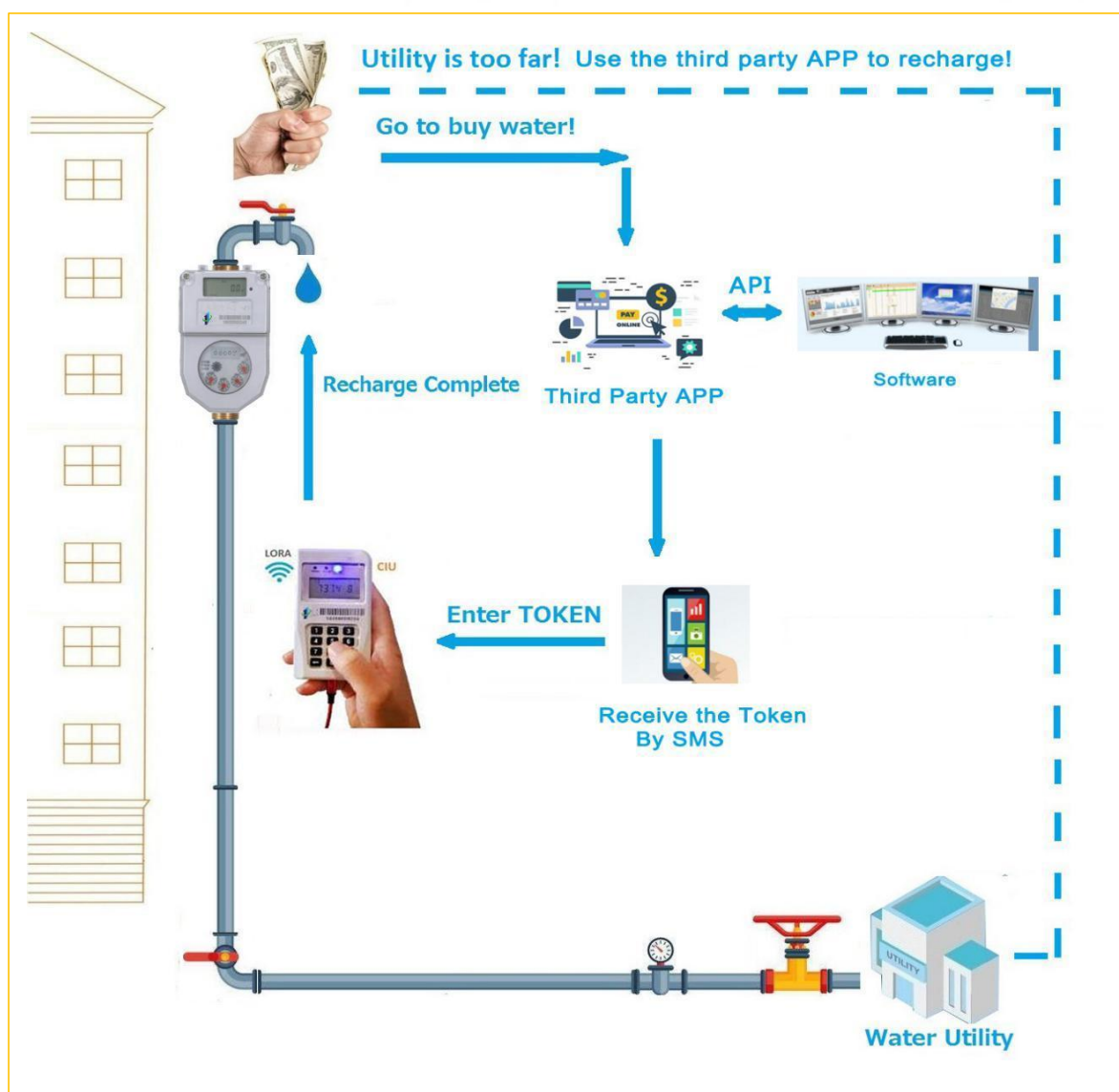
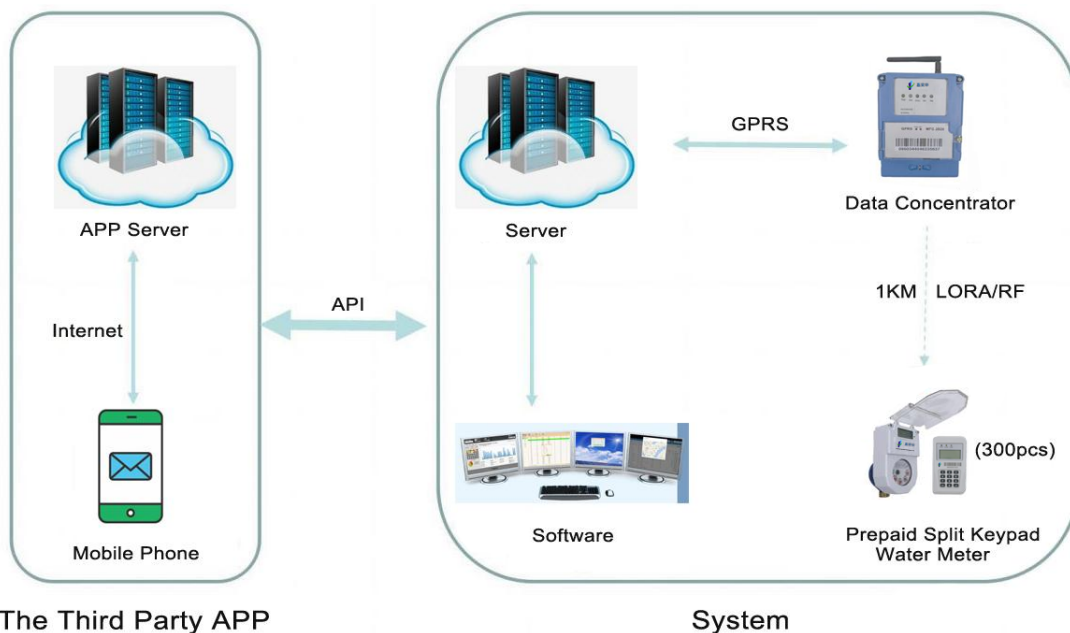
1. Login system
2. Meter number registration
3. Customer information registration
4. Price Setting
5. Open Account
6. Topping up meters
7. Get the Token
8. Input Token to meter with keypad
9. Recharging successfully

### 1. By the third party platform or local mobile payment with API

⇒ Via mobile phone



API: Application Program Interface, which is the agreement connecting the third party APP and our software.

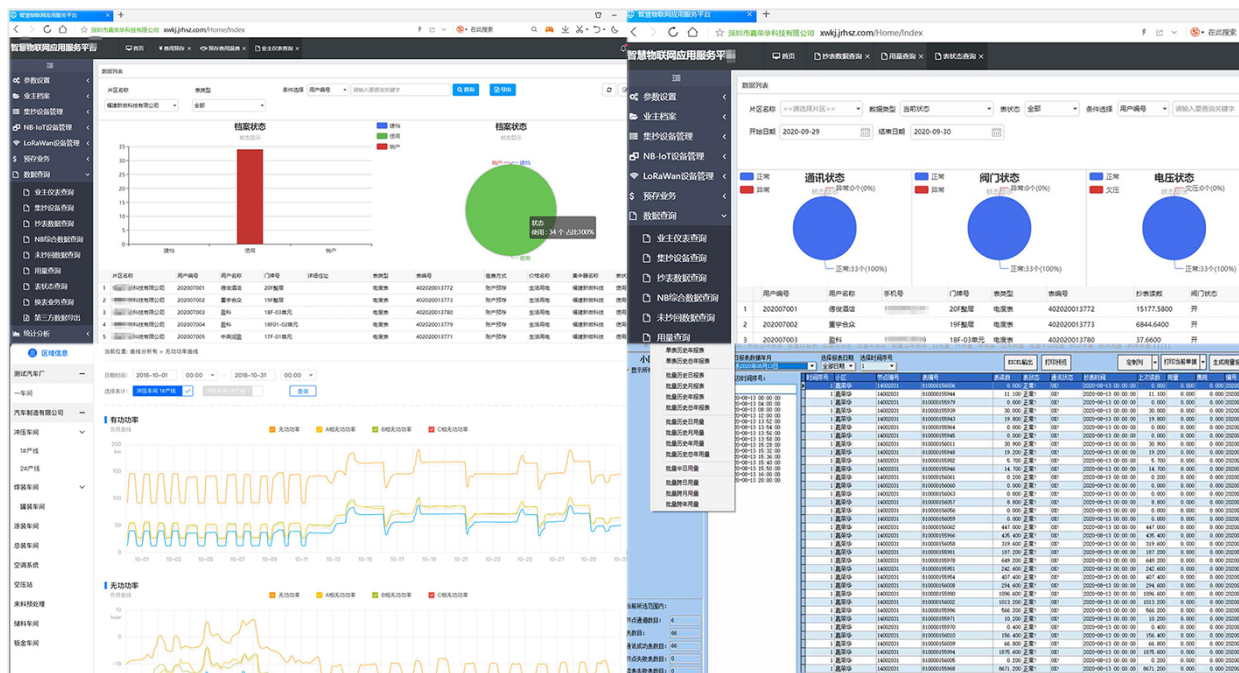


## The advantages to recharge with mobile payment:

- \* Users can top up water by mobile money without leaving the house.
- \* Users could check information by their telephone.
- \* It helps utilities for Revenue protection and consumer management.

## 2. By the AMI System

### ⇒ Recharge remotely via DCU and LORA-RF module



## How to recharge by AMI System?

